



**LEADERS IN OZONE LAYER & CLIMATE PROTECTION**



**MONTHLY ELECTRONIC NEWSLETTER**

STRIVING TO KEEP YOU INFORMED

NOVEMBER 2021 • ISSUE 219

**MOPIA'S 27TH AGM**



MOPIA's 27th Annual General Meeting will be held on November 17th, and it will be a virtual, live-stream event.

All MOPIA stakeholders are invited to partake, but only MOPIA steward members are entitled to vote on issues of corporate business, such as approving documents or making motions. You may become a steward member by purchasing a membership for \$20.

Keep informed MOPIA's 27th AGM at:

- [www.mopia.ca](http://www.mopia.ca)

**MOP 33 OUTCOMES**

The 33rd Meeting of the Parties to the Montreal Protocol was held as a virtual event, coordinated by the United Nations Environment Programme (UNEP), Ozone Secretariat between Oct. 23rd - 29th.

There were 18 decisions adopted on administrative and technical matters, in addition to:

- the replenishment of the Multilateral Fund;
- financial reports and budgets of the trust funds for the Vienna Convention and the Montreal Protocol;
- compliance and reporting;
- membership of Montreal Protocol bodies;
- recommendations of the Ozone Research Managers of the Vienna Convention.

For more information, visit:

- [ozone.unep.org](http://ozone.unep.org)
- [enb.iisd.org/Montreal-Protocol-Ozone-MOP33-Vienna-Convention-COP12](http://enb.iisd.org/Montreal-Protocol-Ozone-MOP33-Vienna-Convention-COP12)

**MOPIA PRESENTS AT  
MARR FORUM**



MOPIA had a strong presence at the Manitoba Association of Regional Recyclers (MARR) held in Winnipeg on Nov 3rd, to share ideas about appliance refrigerant management.

MOPIA presented along with a representative from Gerdau (Selkirk) about the importance and availability of appliance stewardship.

Refrigerants contained in old, abandoned, or discarded appliances are significant greenhouse gases, thousands of times more potent than carbon dioxide. It is critical that these refrigerants are recovered properly before being scrapped.

Municipalities across the province are looking for solutions for appliance stewardship and this MARR forum attempted to provide feasible solutions.

Learn more at:

[mopia.ca](http://mopia.ca) | [marrmb.com](http://marrmb.com) | [gerdau.com](http://gerdau.com)



# MOPIA

## Manitoba Ozone Protection Industry Association

### 2022 SD PERMIT RENEWALS ADVANCE NOTICE

2022 Company Secondary Distributors Permit renewals will be issued in the first week of December via email. SD Permits can be obtained/renewed online, or by phone.

SD Permits are required for any company purchasing regulated refrigerants, new or used HVAC or A/C equipment that contains a regulated refrigerant.

Renew your permit before Dec 31st. Penalties for non-compliance are fines up to \$500,000 on the first offence.

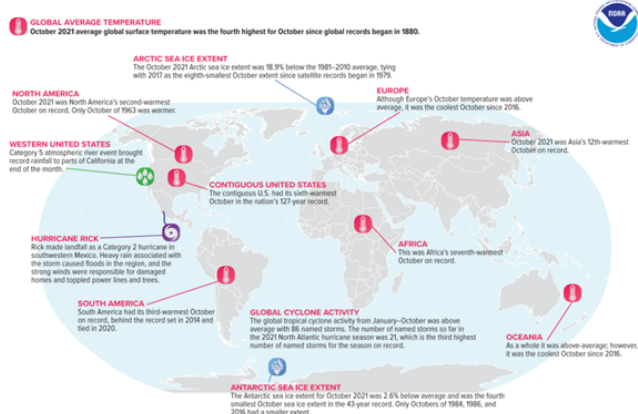
Renew  
now at:

- [www.mopia.ca](http://www.mopia.ca)
- OR
- (204) 338-2222



### CLIMATE ANOMALIES

Selected Significant Climate Anomalies and Events: October 2021



October 2021 was North America's second warmest on record - October 1963 was warmest.

### REGULATED PRODUCTS

Regulated products include nearly all refrigerants (HFC's, HCFC's, CFC's) and all new/used HVAC and A/C equipment attached to the closed refrigerant loop.

View the regulated products at:

- [mopia.ca/compliance](http://mopia.ca/compliance)

**Regulated Refrigerants include CFCs, HCFCs and HFCs**

The Manitoba Ozone Depleting Substances and Other Halocarbons Regulation 103/94 lists all regulated refrigerants. They include CFCs, HCFCs and HFCs, such as R12, R22, R134a, R404A, R407C, R410A, R422B, R428A, R429A, R431A, R438A, R448A, R450A, R452B, R454B, R458B, R460A, R461A, R466A, R468A, R471A, R474A, R477A, R479A, R481A, R484A, R487A, R492A, R494A, R498A, R500A, R502A, R503A, R507A, R509A, R510A, R512A, R513A, R514A, R516A, R518A, R520A, R522A, R523A, R528A, R529A, R530A, R532A, R533A, R536A, R538A, R540A, R542A, R543A, R547A, R548A, R549A, R550A, R551A, R552A, R553A, R554A, R556A, R558A, R560A, R561A, R562A, R563A, R564A, R566A, R568A, R570A, R572A, R573A, R574A, R576A, R578A, R580A, R581A, R582A, R583A, R584A, R586A, R588A, R590A, R591A, R592A, R593A, R594A, R596A, R598A, R600A, R601A, R602A, R603A, R604A, R606A, R608A, R610A, R611A, R612A, R613A, R614A, R616A, R618A, R620A, R621A, R622A, R623A, R624A, R626A, R628A, R630A, R631A, R632A, R633A, R634A, R636A, R638A, R640A, R641A, R642A, R643A, R644A, R646A, R648A, R650A, R651A, R652A, R653A, R654A, R656A, R658A, R660A, R661A, R662A, R663A, R664A, R666A, R668A, R670A, R671A, R672A, R673A, R674A, R676A, R678A, R680A, R681A, R682A, R683A, R684A, R686A, R688A, R690A, R691A, R692A, R693A, R694A, R696A, R698A, R700A, R701A, R702A, R703A, R704A, R706A, R708A, R710A, R711A, R712A, R713A, R714A, R716A, R718A, R720A, R721A, R722A, R723A, R724A, R726A, R728A, R730A, R731A, R732A, R733A, R734A, R736A, R738A, R740A, R741A, R742A, R743A, R744A, R746A, R748A, R750A, R751A, R752A, R753A, R754A, R756A, R758A, R760A, R761A, R762A, R763A, R764A, R766A, R768A, R770A, R771A, R772A, R773A, R774A, R776A, R778A, R780A, R781A, R782A, R783A, R784A, R786A, R788A, R790A, R791A, R792A, R793A, R794A, R796A, R798A, R800A, R801A, R802A, R803A, R804A, R806A, R808A, R810A, R811A, R812A, R813A, R814A, R816A, R818A, R820A, R821A, R822A, R823A, R824A, R826A, R828A, R830A, R831A, R832A, R833A, R834A, R836A, R838A, R840A, R841A, R842A, R843A, R844A, R846A, R848A, R850A, R851A, R852A, R853A, R854A, R856A, R858A, R860A, R861A, R862A, R863A, R864A, R866A, R868A, R870A, R871A, R872A, R873A, R874A, R876A, R878A, R880A, R881A, R882A, R883A, R884A, R886A, R888A, R890A, R891A, R892A, R893A, R894A, R896A, R898A, R900A, R901A, R902A, R903A, R904A, R906A, R908A, R910A, R911A, R912A, R913A, R914A, R916A, R918A, R920A, R921A, R922A, R923A, R924A, R926A, R928A, R930A, R931A, R932A, R933A, R934A, R936A, R938A, R940A, R941A, R942A, R943A, R944A, R946A, R948A, R950A, R951A, R952A, R953A, R954A, R956A, R958A, R960A, R961A, R962A, R963A, R964A, R966A, R968A, R970A, R971A, R972A, R973A, R974A, R976A, R978A, R980A, R981A, R982A, R983A, R984A, R986A, R988A, R990A, R991A, R992A, R993A, R994A, R996A, R998A, R1000A, R1001A, R1002A, R1003A, R1004A, R1006A, R1008A, R1010A, R1011A, R1012A, R1013A, R1014A, R1016A, R1018A, R1020A, R1021A, R1022A, R1023A, R1024A, R1026A, R1028A, R1030A, R1031A, R1032A, R1033A, R1034A, R1036A, R1038A, R1040A, R1041A, R1042A, R1043A, R1044A, R1046A, R1048A, R1050A, R1051A, R1052A, R1053A, R1054A, R1056A, R1058A, R1060A, R1061A, R1062A, R1063A, R1064A, R1066A, R1068A, R1070A, R1071A, R1072A, R1073A, R1074A, R1076A, R1078A, R1080A, R1081A, R1082A, R1083A, R1084A, R1086A, R1088A, R1090A, R1091A, R1092A, R1093A, R1094A, R1096A, R1098A, R1100A, R1101A, R1102A, R1103A, R1104A, R1106A, R1108A, R1110A, R1111A, R1112A, R1113A, R1114A, R1116A, R1118A, R1120A, R1121A, R1122A, R1123A, R1124A, R1126A, R1128A, R1130A, R1131A, R1132A, R1133A, R1134A, R1136A, R1138A, R1140A, R1141A, R1142A, R1143A, R1144A, R1146A, R1148A, R1150A, R1151A, R1152A, R1153A, R1154A, R1156A, R1158A, R1160A, R1161A, R1162A, R1163A, R1164A, R1166A, R1168A, R1170A, R1171A, R1172A, R1173A, R1174A, R1176A, R1178A, R1180A, R1181A, R1182A, R1183A, R1184A, R1186A, R1188A, R1190A, R1191A, R1192A, R1193A, R1194A, R1196A, R1198A, R1200A, R1201A, R1202A, R1203A, R1204A, R1206A, R1208A, R1210A, R1211A, R1212A, R1213A, R1214A, R1216A, R1218A, R1220A, R1221A, R1222A, R1223A, R1224A, R1226A, R1228A, R1230A, R1231A, R1232A, R1233A, R1234A, R1236A, R1238A, R1240A, R1241A, R1242A, R1243A, R1244A, R1246A, R1248A, R1250A, R1251A, R1252A, R1253A, R1254A, R1256A, R1258A, R1260A, R1261A, R1262A, R1263A, R1264A, R1266A, R1268A, R1270A, R1271A, R1272A, R1273A, R1274A, R1276A, R1278A, R1280A, R1281A, R1282A, R1283A, R1284A, R1286A, R1288A, R1290A, R1291A, R1292A, R1293A, R1294A, R1296A, R1298A, R1300A, R1301A, R1302A, R1303A, R1304A, R1306A, R1308A, R1310A, R1311A, R1312A, R1313A, R1314A, R1316A, R1318A, R1320A, R1321A, R1322A, R1323A, R1324A, R1326A, R1328A, R1330A, R1331A, R1332A, R1333A, R1334A, R1336A, R1338A, R1340A, R1341A, R1342A, R1343A, R1344A, R1346A, R1348A, R1350A, R1351A, R1352A, R1353A, R1354A, R1356A, R1358A, R1360A, R1361A, R1362A, R1363A, R1364A, R1366A, R1368A, R1370A, R1371A, R1372A, R1373A, R1374A, R1376A, R1378A, R1380A, R1381A, R1382A, R1383A, R1384A, R1386A, R1388A, R1390A, R1391A, R1392A, R1393A, R1394A, R1396A, R1398A, R1400A, R1401A, R1402A, R1403A, R1404A, R1406A, R1408A, R1410A, R1411A, R1412A, R1413A, R1414A, R1416A, R1418A, R1420A, R1421A, R1422A, R1423A, R1424A, R1426A, R1428A, R1430A, R1431A, R1432A, R1433A, R1434A, R1436A, R1438A, R1440A, R1441A, R1442A, R1443A, R1444A, R1446A, R1448A, R1450A, R1451A, R1452A, R1453A, R1454A, R1456A, R1458A, R1460A, R1461A, R1462A, R1463A, R1464A, R1466A, R1468A, R1470A, R1471A, R1472A, R1473A, R1474A, R1476A, R1478A, R1480A, R1481A, R1482A, R1483A, R1484A, R1486A, R1488A, R1490A, R1491A, R1492A, R1493A, R1494A, R1496A, R1498A, R1500A, R1501A, R1502A, R1503A, R1504A, R1506A, R1508A, R1510A, R1511A, R1512A, R1513A, R1514A, R1516A, R1518A, R1520A, R1521A, R1522A, R1523A, R1524A, R1526A, R1528A, R1530A, R1531A, R1532A, R1533A, R1534A, R1536A, R1538A, R1540A, R1541A, R1542A, R1543A, R1544A, R1546A, R1548A, R1550A, R1551A, R1552A, R1553A, R1554A, R1556A, R1558A, R1560A, R1561A, R1562A, R1563A, R1564A, R1566A, R1568A, R1570A, R1571A, R1572A, R1573A, R1574A, R1576A, R1578A, R1580A, R1581A, R1582A, R1583A, R1584A, R1586A, R1588A, R1590A, R1591A, R1592A, R1593A, R1594A, R1596A, R1598A, R1600A, R1601A, R1602A, R1603A, R1604A, R1606A, R1608A, R1610A, R1611A, R1612A, R1613A, R1614A, R1616A, R1618A, R1620A, R1621A, R1622A, R1623A, R1624A, R1626A, R1628A, R1630A, R1631A, R1632A, R1633A, R1634A, R1636A, R1638A, R1640A, R1641A, R1642A, R1643A, R1644A, R1646A, R1648A, R1650A, R1651A, R1652A, R1653A, R1654A, R1656A, R1658A, R1660A, R1661A, R1662A, R1663A, R1664A, R1666A, R1668A, R1670A, R1671A, R1672A, R1673A, R1674A, R1676A, R1678A, R1680A, R1681A, R1682A, R1683A, R1684A, R1686A, R1688A, R1690A, R1691A, R1692A, R1693A, R1694A, R1696A, R1698A, R1700A, R1701A, R1702A, R1703A, R1704A, R1706A, R1708A, R1710A, R1711A, R1712A, R1713A, R1714A, R1716A, R1718A, R1720A, R1721A, R1722A, R1723A, R1724A, R1726A, R1728A, R1730A, R1731A, R1732A, R1733A, R1734A, R1736A, R1738A, R1740A, R1741A, R1742A, R1743A, R1744A, R1746A, R1748A, R1750A, R1751A, R1752A, R1753A, R1754A, R1756A, R1758A, R1760A, R1761A, R1762A, R1763A, R1764A, R1766A, R1768A, R1770A, R1771A, R1772A, R1773A, R1774A, R1776A, R1778A, R1780A, R1781A, R1782A, R1783A, R1784A, R1786A, R1788A, R1790A, R1791A, R1792A, R1793A, R1794A, R1796A, R1798A, R1800A, R1801A, R1802A, R1803A, R1804A, R1806A, R1808A, R1810A, R1811A, R1812A, R1813A, R1814A, R1816A, R1818A, R1820A, R1821A, R1822A, R1823A, R1824A, R1826A, R1828A, R1830A, R1831A, R1832A, R1833A, R1834A, R1836A, R1838A, R1840A, R1841A, R1842A, R1843A, R1844A, R1846A, R1848A, R1850A, R1851A, R1852A, R1853A, R1854A, R1856A, R1858A, R1860A, R1861A, R1862A, R1863A, R1864A, R1866A, R1868A, R1870A, R1871A, R1872A, R1873A, R1874A, R1876A, R1878A, R1880A, R1881A, R1882A, R1883A, R1884A, R1886A, R1888A, R1890A, R1891A, R1892A, R1893A, R1894A, R1896A, R1898A, R1900A, R1901A, R1902A, R1903A, R1904A, R1906A, R1908A, R1910A, R1911A, R1912A, R1913A, R1914A, R1916A, R1918A, R1920A, R1921A, R1922A, R1923A, R1924A, R1926A, R1928A, R1930A, R1931A, R1932A, R1933A, R1934A, R1936A, R1938A, R1940A, R1941A, R1942A, R1943A, R1944A, R1946A, R1948A, R1950A, R1951A, R1952A, R1953A, R1954A, R1956A, R1958A, R1960A, R1961A, R1962A, R1963A, R1964A, R1966A, R1968A, R1970A, R1971A, R1972A, R1973A, R1974A, R1976A, R1978A, R1980A, R1981A, R1982A, R1983A, R1984A, R1986A, R1988A, R1990A, R1991A, R1992A, R1993A, R1994A, R1996A, R1998A, R2000A, R2001A, R2002A, R2003A, R2004A, R2006A, R2008A, R2010A, R2011A, R2012A, R2013A, R2014A, R2016A, R2018A, R2020A, R2021A, R2022A, R2023A, R2024A, R2026A, R2028A, R2030A, R2031A, R2032A, R2033A, R2034A, R2036A, R2038A, R2040A, R2041A, R2042A, R2043A, R2044A, R2046A, R2048A, R2050A, R2051A, R2052A, R2053A, R2054A, R2056A, R2058A, R2060A, R2061A, R2062A, R2063A, R2064A, R2066A, R2068A, R2070A, R2071A, R2072A, R2073A, R2074A, R2076A, R2078A, R2080A, R2081A, R2082A, R2083A, R2084A, R2086A, R2088A, R2090A, R2091A, R2092A, R2093A, R2094A, R2096A, R2098A, R2100A, R2101A, R2102A, R2103A, R2104A, R2106A, R2108A, R2110A, R2111A, R2112A, R2113A, R2114A, R2116A, R2118A, R2120A, R2121A, R2122A, R2123A, R2124A, R2126A, R2128A, R2130A, R2131A, R2132A, R2133A, R2134A, R2136A, R2138A, R2140A, R2141A, R2142A, R2143A, R2144A, R2146A, R2148A, R2150A, R2151A, R2152A, R2153A, R2154A, R2156A, R2158A, R2160A, R2161A, R2162A, R2163A, R2164A, R2166A, R2168A, R2170A, R2171A, R2172A, R2173A, R2174A, R2176A, R2178A, R2180A, R2181A, R2182A, R2183A, R2184A, R2186A, R2188A, R2190A, R2191A, R2192A, R2193A, R2194A, R2196A, R2198A, R2200A, R2201A, R2202A, R2203A, R2204A, R2206A, R2208A, R2210A, R2211A, R2212A, R2213A, R2214A, R2216A, R2218A, R2220A, R2221A, R2222A, R2223A, R2224A, R2226A, R2228A, R2230A, R2231A, R2232A, R2233A, R2234A, R2236A, R2238A, R2240A, R2241A, R2242A, R2243A, R2244A, R2246A, R2248A, R2250A, R2251A, R2252A, R2253A, R2254A, R2256A, R2258A, R2260A, R2261A, R2262A, R2263A, R2264A, R2266A, R2268A, R2270A, R2271A, R2272A, R2273A, R2274A, R2276A, R2278A, R2280A, R2281A, R2282A, R2283A, R2284A, R2286A, R2288A, R2290A, R2291A, R2292A, R2293A, R2294A, R2296A, R2298A, R2300A, R2301A, R2302A, R2303A, R2304A, R2306A, R2308A, R2310A, R2311A, R2312A, R2313A, R2314A, R2316A, R2318A, R2320A, R2321A, R2322A, R2323A, R2324A, R2326A, R2328A, R2330A, R2331A, R2332A, R2333A, R2334A, R2336A, R2338A, R2340A, R2341A, R2342A, R2343A, R2344A, R2346A, R2348A, R2350A, R2351A, R2352A, R2353A, R2354A, R2356A, R2358A, R2360A, R2361A, R2362A, R2363A, R2364A, R2366A, R2368A, R2370A, R2371A, R2372A, R2373A, R2374A, R2376A, R2378A, R2380A, R2381A, R2382A, R2383A, R2384A, R2386A, R2388A, R2390A, R2391A, R2392A, R2393A, R2394A, R2396A, R2398A, R2400A, R2401A, R2402A, R2403A, R2404A, R2406A, R2408A, R2410A, R2411A, R2412A, R2413A, R2414A, R2416A, R2418A, R2420A, R2421A, R2422A, R2423A, R2424A, R2426A, R2428A, R2430A, R2431A, R2432A, R2433A, R2434A, R2436A, R2438A, R2440A, R2441A, R2442A, R2443A, R2444A, R2446A, R2448A, R2450A, R2451A, R2452A, R2453A, R2454A, R2456A, R2458A, R2460A, R2461A, R2462A, R2463A, R2464A, R2466A, R2468A, R2470A, R2471A, R2472A, R2473A, R2474A, R2476A, R2478A, R2480A, R2481A, R2482A, R2483A, R2484A, R2486A, R2488A, R2490A, R2491A, R2492A, R2493A, R2494A, R2496A, R2498A, R2500A, R2501A, R2502A, R2503A, R2504A, R2506A, R2508A, R2510A, R2511A, R2512A, R2513A, R2514A, R2516A, R2518A, R2520A, R2521A, R2522A, R2523A, R2524A, R2526A, R2528A, R2530A, R2531A, R2532A, R2533A, R2534A, R2536A, R2538A, R2540A, R2541A, R2542A, R2543A, R2544A, R2546A, R2548A, R2550A, R2551A, R2552A, R2553A, R2554A, R2556A, R2558A, R2560A, R2561A, R2562A, R2563A, R2564A, R2566A, R2568A, R2570A, R2571A, R2572A, R2573A, R2574A, R2576A, R2578A, R2580A, R2581A, R2582A, R2583A, R2584A, R2586A, R2588A, R2590A, R2591A, R2592A, R2593A, R2594A, R2596A, R2598A, R2600A, R2601A, R2602A, R2603A, R2604A, R2606A, R2608A, R2610A, R2611A, R2612A, R2613A, R2614A, R2616A, R2618A, R2620A, R2621A, R2622A, R2623A, R2624A, R2626A, R2628A, R2630A, R2631A, R2632A, R2633A, R2634A, R2636A, R2638A, R2640A, R2641A, R2642A, R2643A, R2644A, R2646A, R2648A, R2650A, R2651A, R2652A, R2653A, R2654A, R2656A, R2658A, R2660A, R2661A, R2662A, R2663A, R2664A, R2666A, R2668A, R2670A, R2671A, R2672A, R2673A, R2674A, R2676A, R2678A, R2680A, R2681A, R2682A, R2683A, R2684A, R2686A, R2688A, R2690A, R2691A, R2692A, R2693A, R2694A, R2696A, R2698A, R2700A, R2701A, R2702A, R2703A, R2704A, R2706A, R2708A, R2710A, R2711A, R2712A, R2713A, R2714A, R2716A, R2718A, R2720A, R2721A, R2722A, R2723A, R2724A, R2726A, R2728A, R2730A, R2731A, R2732A, R2733A, R2734A, R2736A, R2738A, R2740A, R2741A, R2742A, R2743A, R2744A, R2746A, R2748A, R2750A, R2751A, R2752A, R2753A, R2754A, R2756A, R2758A, R2760A, R2761A, R2762A, R2763A, R2764A, R2766A, R2768A, R2